

**Parking Ticket/Jewelry Envelope**

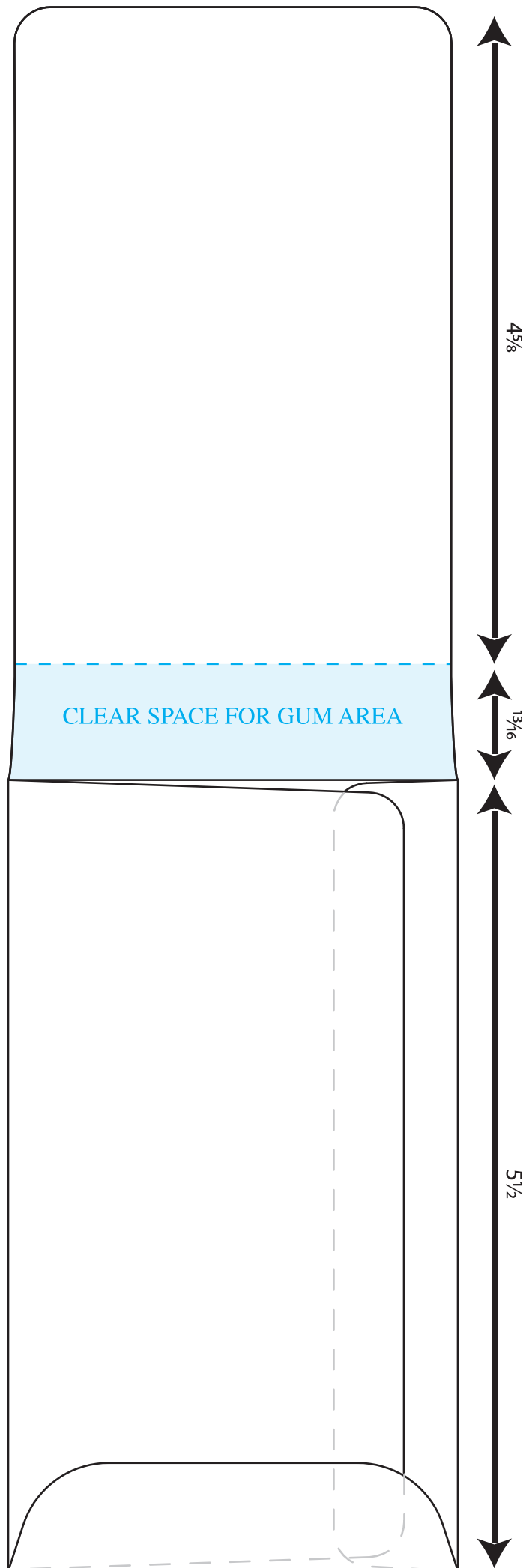
Prod. No. **4162**

**Envelope size:** 3 1/8" x 5 1/2"

**Receipt Flap:** 3 1/16" x 4 5/8"

**Ext. Sealed Pocket:** 3 1/8" x 6 5/16"

*This dieline requires an 11x17 sheet  
in order to be printed at 100%*



**INSIDE**

This template is for reference only - please do not use to lay out your artwork.

For a detailed layout or dieline, please contact us:



**Western States Envelope & Label**

800-558-0514 • [www.wsel.com/contact](http://www.wsel.com/contact)

To print at full size - remember to set your page scaling/size to "None" or "Actual Size".

**Parking Ticket/Jewelry Envelope**

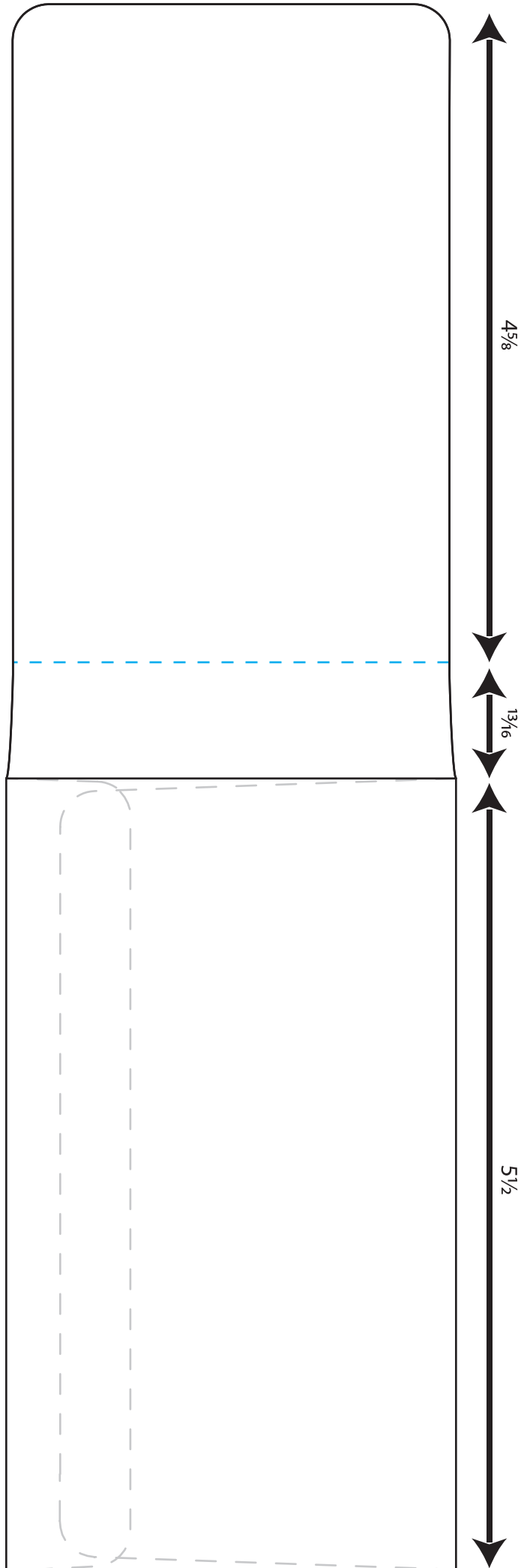
Prod. No. **4162**

Envelope size:  $3\frac{1}{8}$ " x  $5\frac{1}{2}$ "

Receipt Flap:  $3\frac{1}{16}$ " x  $4\frac{5}{8}$ "

Ext. Sealed Pocket:  $3\frac{1}{8}$ " x  $6\frac{5}{16}$ "

*This dieline requires an 11x17 sheet  
in order to be printed at 100%*



**OUTSIDE**

This template is for reference only - please do not use to lay out your artwork.

For a detailed layout or dieline, please contact us:



**Western States Envelope & Label**

800-558-0514 • [www.wsel.com/contact](http://www.wsel.com/contact)

To print at full size - remember to set your page scaling/size to "None" or "Actual Size".