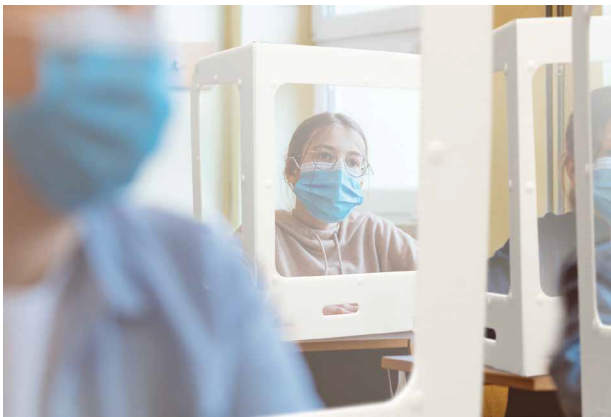


TWO-PANEL DESK DIVIDERS

Protect students and staff with portable L-shaped Desk Dividers to create a physical separation and shield from coughing, sneezing, and spreading germs. Move from one room to the next quickly and easily with our lightweight and free-standing desk shield. Easy to disinfect and reuse, these dividers set up and knock down in seconds. Clear plastic window areas offer optimal visibility from two sides. We die-cut all pieces with rounded corners for safety and secure the windows with plastic rivets. Our economical dividers also feature a convenient handle, magnetic closures and two durable sign holders for stability on flat surfaces.



Blank



Printed



Features:

Printing: Choose from blank or 4CP printed on one side

Assembled Size: 20.5" L x 15" W x 23" H

Folded Size: 20.5" L x 0.5" W x 23" H

Weight: Less than 1 pound

Production Time: Approximately 6 working days for blank and 8 working days for printed versions to ship.

Visibility: High-quality optical windows on both sides.

Assembly: Sets up in seconds – simply slide the sign holders on at the notched areas, unfold, and stand up on a flat surface.

Stands Included: Two 3" sign stands with permanent adhesive tape included if mounting dividers is desired (mounting not necessary).

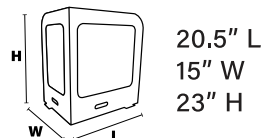
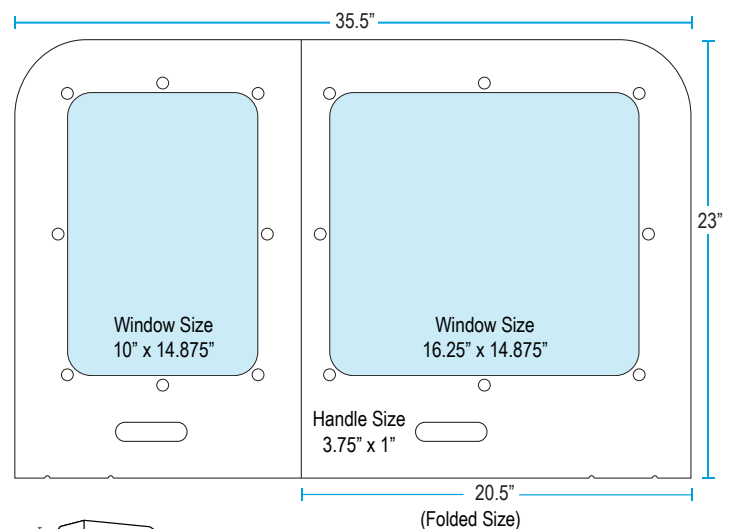
Portable: Fold and carry with convenient handle cut-outs.

Shelf Life: Guaranteed for up to 1 year, for outdoor use.

Safe: Die-cut round corners and high-quality white corrugated plastic and clear APET materials.

Care: Clean using mild soapy water and a non-abrasive soft cloth.

Made in the USA / Returns not accepted due to sanitation restrictions.



For more information and pricing, contact us today!



Western States
envelopes • labels • packaging

800.558.0514
wsel.com
cservice@wsel.com